

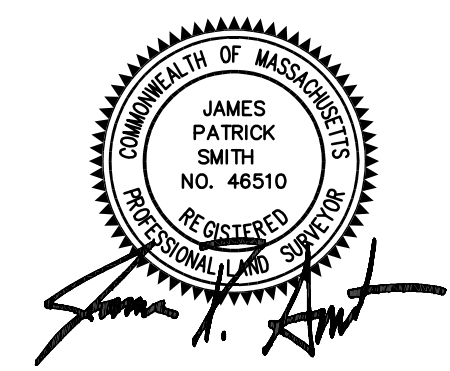
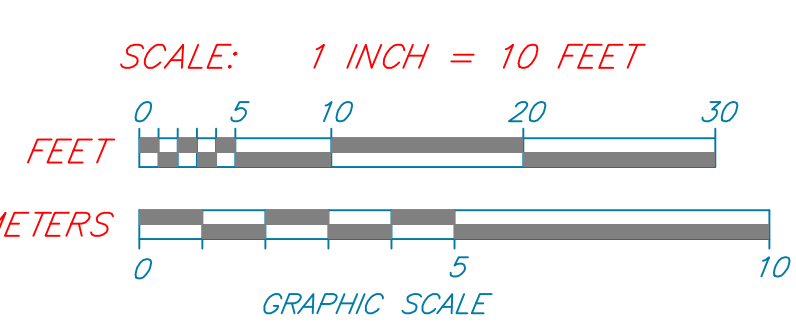
LEGEND

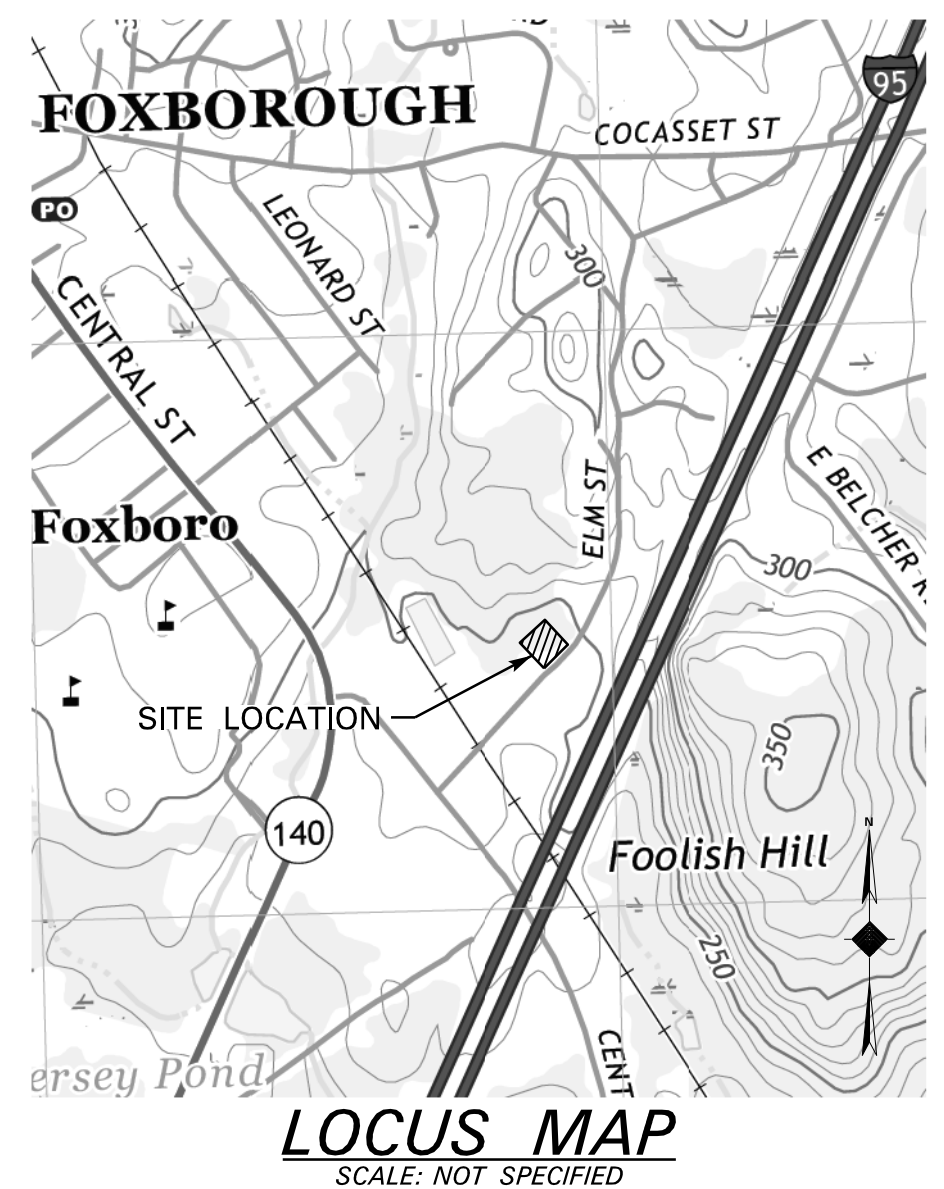
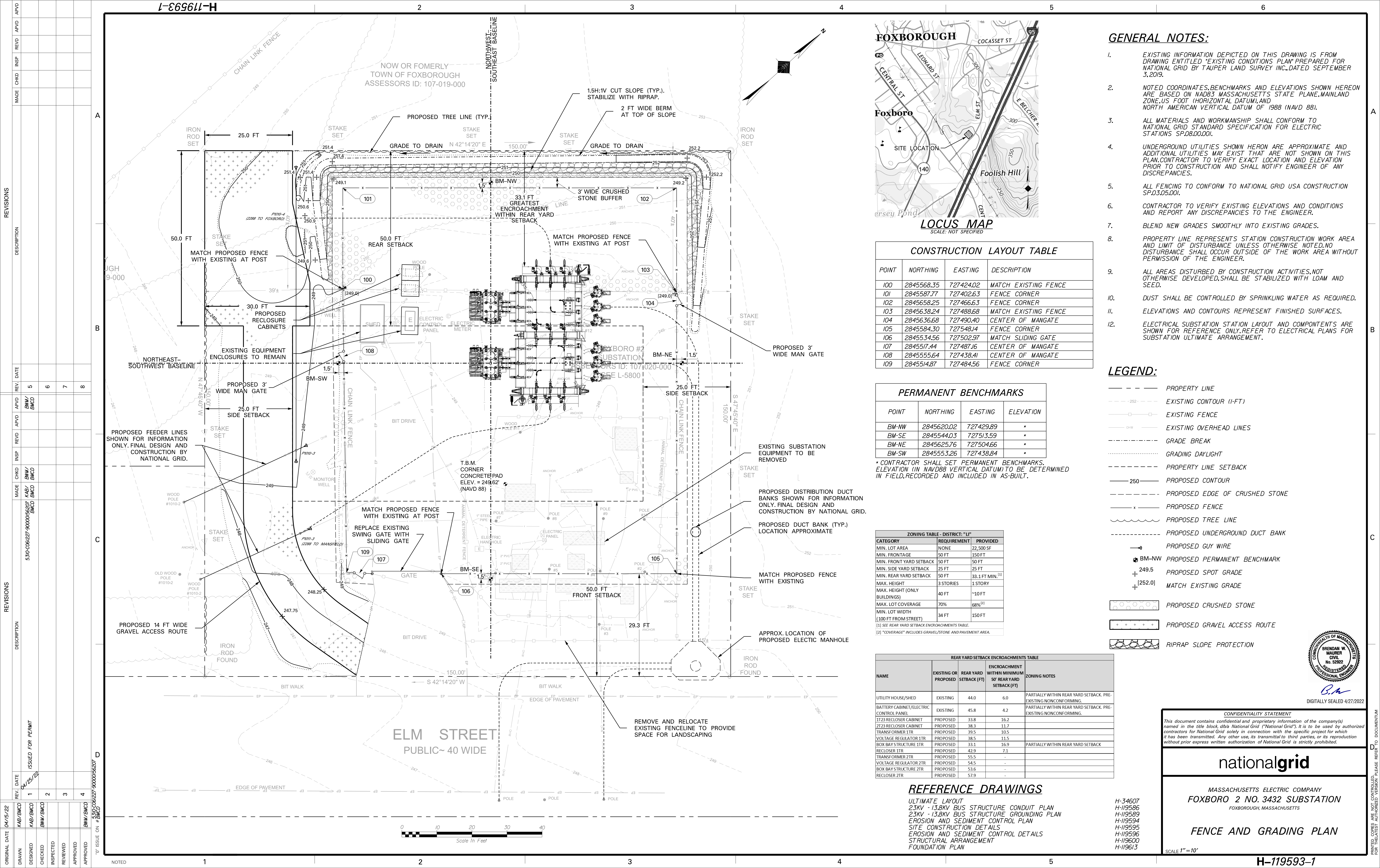
- IRON PIPE FOUND
- DRILL HOLE FOUND
- STONE OR CONCRETE MONUMENTS
- SEWER MANHOLE
- DRAIN MANHOLE
- ELECTRIC MANHOLE
- TELEPHONE MANHOLE
- WATER MANHOLE
- UNDETERMINED MANHOLE
- CATCH BASIN
- CLEANOUT
- MONITORING WELL
- ANCHOR
- UTILITY POLE
- WATER GATE VALVE
- WATER SHUT OFF
- HYDRANT
- BENCHMARK
- GAS VALVE
- SIGN
- LIGHT POLE / LAMP POST
- FLAG POLE
- MAILBOX (MBX)
- BOLLARD
- SHRUBS, BUSHES, ETC.
- DECIDUOUS TREE
- CONIFEROUS TREE
- ELECTRIC LINE
- SEWER LINE
- DRAIN LINE
- WATER LINE
- GAS LINE
- TELEPHONE LINE
- OVERHEAD WIRES
- CABLE TELEVISION
- STONEWALL
- EDGE OF PAVEMENT
- FENCING (AS NOTED)
- GUARD RAILING (AS NOTED)
- TREE LINE

VERSION	1
VERSION DESCRIPTION	
DATE	
VER	1
2	
3	
4	
5	
6	
7	
PREPARED FOR:	Massachusetts Electric Company d/b/a/nationalgrid
REVISIONS	
DATE	
FIELD BY:	J.C. & S.H.
DRAFTED BY:	J.A.C.
REVIEWED BY:	J.P.S.
SCALE:	1" = 10'
DATE:	8-29-19
SHEET:	1 OF 1
INDEX:	
APPROVED BY:	J.P.S.
EXISTING CONDITIONS PLAN OWNED BY MASSACHUSETTS ELECTRIC COMPANY 63 ELM ST FOXBORO, MASSACHUSETTS SCALE: 1" = 10' AUGUST 29, 2019	
TAUPER LAND SURVEY INC. 710 MAIN STREET, OXFORD, MA 01537 TEL: 508-987-2266 FAX 508-234-7723	
REGISTERED PROFESSIONAL SURVEYOR	

PLAN NOTES:

- 1.) THE UTILITIES SHOWN HEREON ARE THE RESULT OF AN ON THE GROUND SURVEY PERFORMED BY THIS OFFICE ON AUGUST 19, 2019.
- 2.) THIS PLAN DEPICTS ONLY THOSE FEATURES THAT WERE VISUALLY APPARENT AT THE TIME OF THE SURVEY. THE ABSENCE OF SUBSURFACE STRUCTURES, UTILITIES, ETC. IS NOT INTENDED OR IMPLIED.
- 3.) PRIOR TO ANY EXCAVATION, THE CONTRACTOR SHALL CONTACT DIG-SAFE AT 1-888-344-7233 AND OBTAIN A DIG-SAFE NUMBER AT LEAST 72 HOURS PRIOR TO INITIATING WORK.
- 5.) HORIZONTAL DATUM IS MASSACHUSETTS STATE PLANE NAD83.
- 6.) VERTICAL DATUM IS NAVD 88 ESTABLISHED BY RTK GPS OBSERVATIONS





- GENERAL NOTES:**
- EXISTING INFORMATION DEPICTED ON THIS DRAWING IS FROM DRAWING ENTITLED "EXISTING CONDITIONS PLAN" PREPARED FOR NATIONAL GRID BY TAUPER LAND SURVEY INC., DATED SEPTEMBER 3, 2019.
 - NOTED COORDINATES, BENCHMARKS AND ELEVATIONS SHOWN HEREON ARE BASED ON NAD83 MASSACHUSETTS STATE PLANE, MAINLAND ZONE, US FOOT (HORIZONTAL DATUM), AND NORTH AMERICAN VERTICAL DATUM OF 1988 (NAVD 88).
 - ALL MATERIALS AND WORKMANSHIP SHALL CONFORM TO NATIONAL GRID STANDARD SPECIFICATION FOR ELECTRIC STATIONS SP.08.00.001.
 - UNDERGROUND UTILITIES SHOWN HEREON ARE APPROXIMATE AND ADDITIONAL UTILITIES MAY EXIST THAT ARE NOT SHOWN ON THIS PLAN. CONTRACTOR TO VERIFY EXACT LOCATION AND ELEVATION PRIOR TO CONSTRUCTION AND SHALL NOTIFY ENGINEER OF ANY DISCREPANCIES.
 - ALL FENCING TO CONFORM TO NATIONAL GRID USA CONSTRUCTION SP.03.05.001.
 - CONTRACTOR TO VERIFY EXISTING ELEVATIONS AND CONDITIONS AND REPORT ANY DISCREPANCIES TO THE ENGINEER.
 - BLEND NEW GRADES SMOOTHLY INTO EXISTING GRADES.
 - PROPERTY LINE REPRESENTS STATION CONSTRUCTION WORK AREA AND LIMIT OF DISTURBANCE UNLESS OTHERWISE NOTED. NO DISTURBANCE SHALL OCCUR OUTSIDE OF THE WORK AREA WITHOUT PERMISSION OF THE ENGINEER.
 - ALL AREAS DISTURBED BY CONSTRUCTION ACTIVITIES, NOT OTHERWISE DEVELOPED, SHALL BE STABILIZED WITH LOAM AND SEED.
 - DUST SHALL BE CONTROLLED BY SPRINKLING WATER AS REQUIRED.
 - ELEVATIONS AND CONTOURS REPRESENT FINISHED SURFACES.
 - ELECTRICAL SUBSTATION STATION LAYOUT AND COMPONENTS ARE SHOWN FOR REFERENCE ONLY. REFER TO ELECTRICAL PLANS FOR SUBSTATION ULTIMATE ARRANGEMENT.

CONSTRUCTION LAYOUT TABLE

POINT	NORTHING	EASTING	DESCRIPTION
100	2845568.35	727424.02	MATCH EXISTING FENCE
101	2845587.77	727402.63	FENCE CORNER
102	2845658.25	727466.63	FENCE CORNER
103	2845638.24	727488.68	MATCH EXISTING FENCE
104	2845636.68	727490.40	CENTER OF MANGATE
105	2845584.30	727548.14	FENCE CORNER
106	2845534.56	727502.97	MATCH SLIDING GATE
107	2845517.44	727487.16	CENTER OF MANGATE
108	2845555.64	727438.41	CENTER OF MANGATE
109	2845514.87	727484.56	FENCE CORNER

PERMANENT BENCHMARKS

POINT	NORTHING	EASTING	ELEVATION
BM-NW	2845620.02	727429.89	*
BM-SE	2845544.03	727513.59	*
BM-NE	2845625.76	727504.66	*
BM-SW	2845553.26	727438.84	*

* CONTRACTOR SHALL SET PERMANENT BENCHMARKS. ELEVATION (IN NAVD88 VERTICAL DATUM) TO BE DETERMINED IN FIELD, RECORDED AND INCLUDED IN AS-BUILT.

ZONING TABLE - DISTRICT: "LI"

CATEGORY	REQUIREMENT	PROVIDED
MIN. LOT AREA	NONE	22,500 SF
MIN. FRONTAGE	50 FT	150 FT
MIN. FRONT YARD SETBACK	50 FT	50 FT
MIN. SIDE YARD SETBACK	25 FT	25 FT
MIN. REAR YARD SETBACK	50 FT	33.1 FT MIN. [1]
MAX. HEIGHT	3 STORIES	1 STORY
MAX. HEIGHT (ONLY BUILDINGS)	40 FT	~10 FT
MAX. LOT COVERAGE	70%	68% [2]
MIN. LOT WIDTH (100 FT FROM STREET)	34 FT	150 FT

[1] SEE REAR YARD SETBACK ENCROACHMENTS TABLE.
[2] "COVERAGE" INCLUDES GRAVEL/STONE AND PAVEMENT AREA.

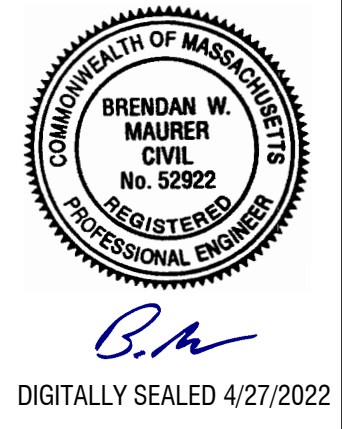
REAR YARD SETBACK ENCROACHMENTS TABLE

NAME	EXISTING OR PROPOSED	REAR YARD SETBACK (FT)	ENCROACHMENT WITHIN MINIMUM 50' REAR YARD SETBACK (FT)	ZONING NOTES
UTILITY HOUSE/SHED	EXISTING	44.0	6.0	PARTIALLY WITHIN REAR YARD SETBACK. PRE-EXISTING NONCONFORMING.
BATTERY CABINET/ELECTRIC CONTROL PANEL	EXISTING	45.8	4.2	PARTIALLY WITHIN REAR YARD SETBACK. PRE-EXISTING NONCONFORMING.
1T23 RECLOSURE CABINET	PROPOSED	33.8	16.2	
2T23 RECLOSURE CABINET	PROPOSED	38.3	11.7	
TRANSFORMER 1TR	PROPOSED	39.5	10.5	
VOLTAGE REGULATOR 1TR	PROPOSED	38.5	11.5	
BOX BAY STRUCTURE 1TR	PROPOSED	33.1	16.9	PARTIALLY WITHIN REAR YARD SETBACK
RECLOSURE 1TR	PROPOSED	42.9	7.1	
TRANSFORMER 2TR	PROPOSED	55.5	-	
VOLTAGE REGULATOR 2TR	PROPOSED	54.5	-	
BOX BAY STRUCTURE 2TR	PROPOSED	53.6	-	
RECLOSURE 2TR	PROPOSED	57.9	-	

REFERENCE DRAWINGS

- ULTIMATE LAYOUT
- 23KV - 13.8KV BUS STRUCTURE CONDUIT PLAN
- 23KV - 13.8KV BUS STRUCTURE GROUNDING PLAN
- EROSION AND SEDIMENT CONTROL PLAN
- SITE CONSTRUCTION DETAILS
- EROSION AND SEDIMENT CONTROL DETAILS
- STRUCTURAL ARRANGEMENT
- FOUNDATION PLAN

- LEGEND:**
- PROPERTY LINE
 - - - - - EXISTING CONTOUR (1-FT)
 - - - - - EXISTING FENCE
 - - - - - EXISTING OVERHEAD LINES
 - - - - - GRADE BREAK
 - GRADING DAYLIGHT
 - - - - - PROPERTY LINE SETBACK
 - 250 --- PROPOSED CONTOUR
 - - - - - PROPOSED EDGE OF CRUSHED STONE
 - - - - - PROPOSED FENCE
 - ~~~~~ PROPOSED TREE LINE
 - - - - - PROPOSED UNDERGROUND DUCT BANK
 - PROPOSED GUY WIRE
 - BM-NW PROPOSED PERMANENT BENCHMARK
 - + 249.5 PROPOSED SPOT GRADE
 - + [252.0] MATCH EXISTING GRADE
 - XXXXX PROPOSED CRUSHED STONE
 - +++++ PROPOSED GRAVEL ACCESS ROUTE
 - ||||| RIPRAP SLOPE PROTECTION



DIGITALLY SEALED 4/27/2022

CONFIDENTIALITY STATEMENT
This document contains confidential and proprietary information of the company(s) named in the title block, dba National Grid ("National Grid"). It is to be used by authorized contractors for National Grid solely in connection with the specific project for which it has been transmitted. Any other use, its transmittal to third parties, or its reproduction without prior express written authorization of National Grid is strictly prohibited.

nationalgrid

MASSACHUSETTS ELECTRIC COMPANY
FOXBORO 2 NO. 3432 SUBSTATION
FOXBOROUGH, MASSACHUSETTS

FENCE AND GRADING PLAN

SCALE 1" = 10'

REVISIONS

REV.	DATE	DESCRIPTION	BY	CHKD
1	04/15/22	ISSUED FOR PERMIT		
2				
3				
4				

ORIGINAL DATE: 04/15/22
DRAWN: KAB/BMCD
CHECKED: KAB/BMCD
INSPECTED: BMW/BMCD
REVIEWED: BMW/BMCD
APPROVED: BMW/BMCD
10' ISSUE ON: # BMCD

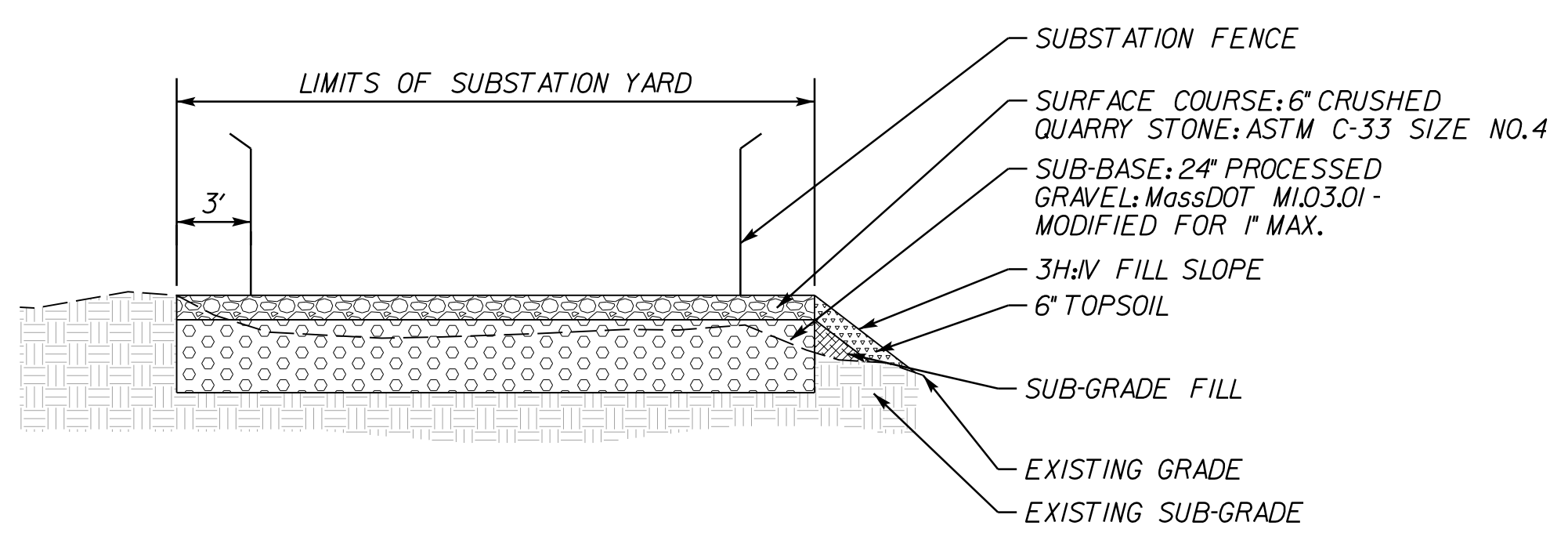
NOTED

1 2 3 4 5 6 7 8

531006127-9000056207 KAB/BMCD
531006127-9000056207 KAB/BMCD
531006127-9000056207 KAB/BMCD

MADE CHKD INSP REV APVD

REVISIONS	MADE	CHKD	INSP	REVD	APVD	
DESCRIPTION	DATE	REV.	5	6	7	8
1	SS/BMCD					
2	KAB/BMCD					
3	BW/BMCD					
4	BW/BMCD					

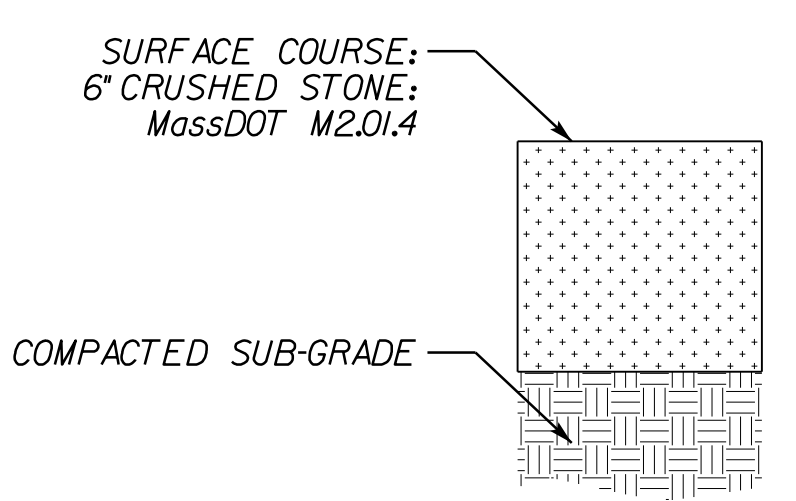


NOTES:

- REFER TO NATIONAL GRID STANDARD SP.08.00.001, ELECTRIC SUBSTATION CONSTRUCTION SPECIFICATION FOR ADDITIONAL INFORMATION.
- SUB-GRADE FILL IN AREAS DEEPER THAN 30 INCHES FROM FINISHED GRADE SHALL CONFORM TO GRAVEL BORROW, MassDOT M1.03.0 TYPE B, AS SPECIFIED IN NATIONAL GRID STANDARD SP.08.00.001.

SUBSTATION YARD - TYPICAL SECTION

NOT TO SCALE

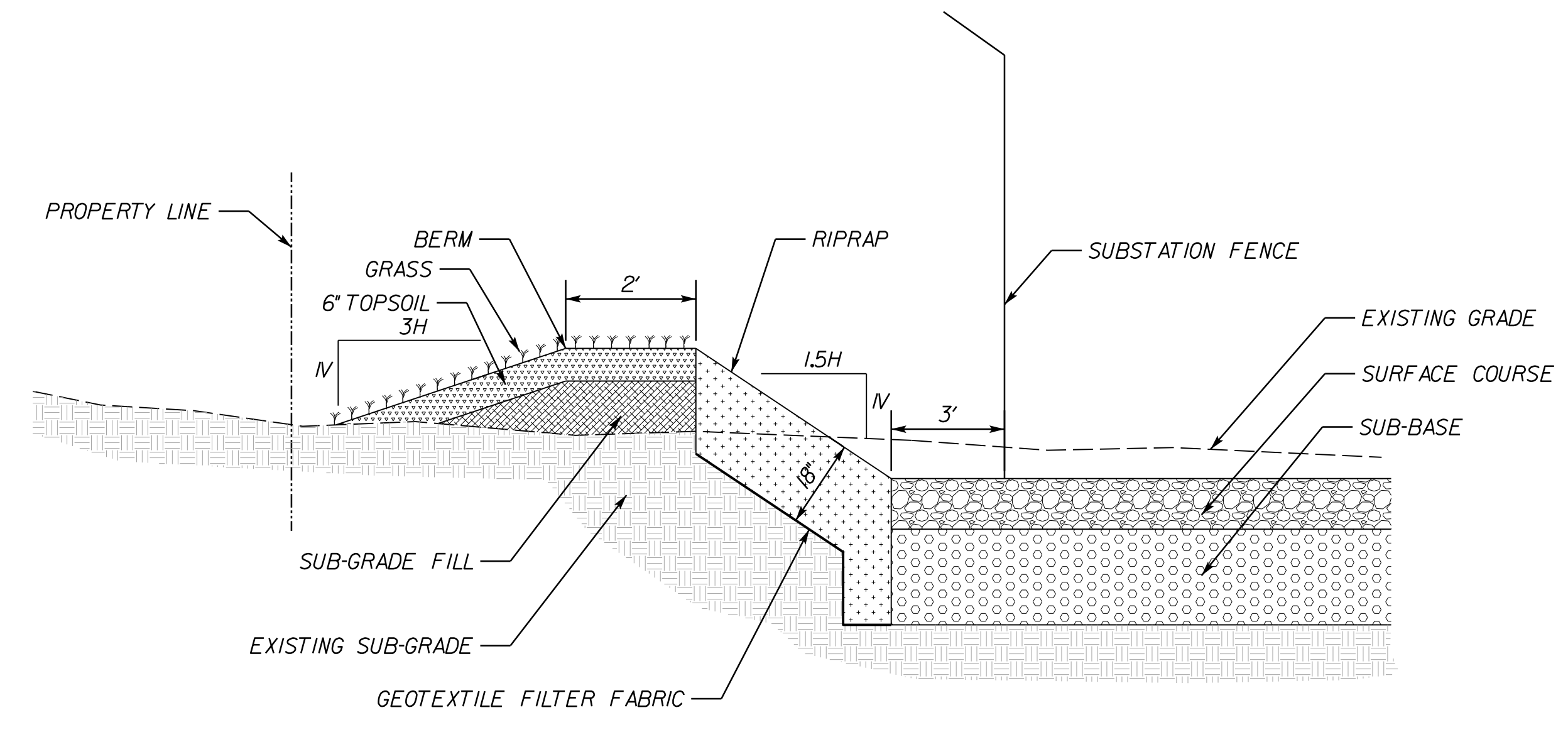


NOTES:

- REFER TO NATIONAL GRID STANDARD SP.08.00.001, ELECTRIC SUBSTATION CONSTRUCTION SPECIFICATION FOR ADDITIONAL INFORMATION.

GRAVEL ACCESS ROUTE - TYPICAL SECTION

NOT TO SCALE

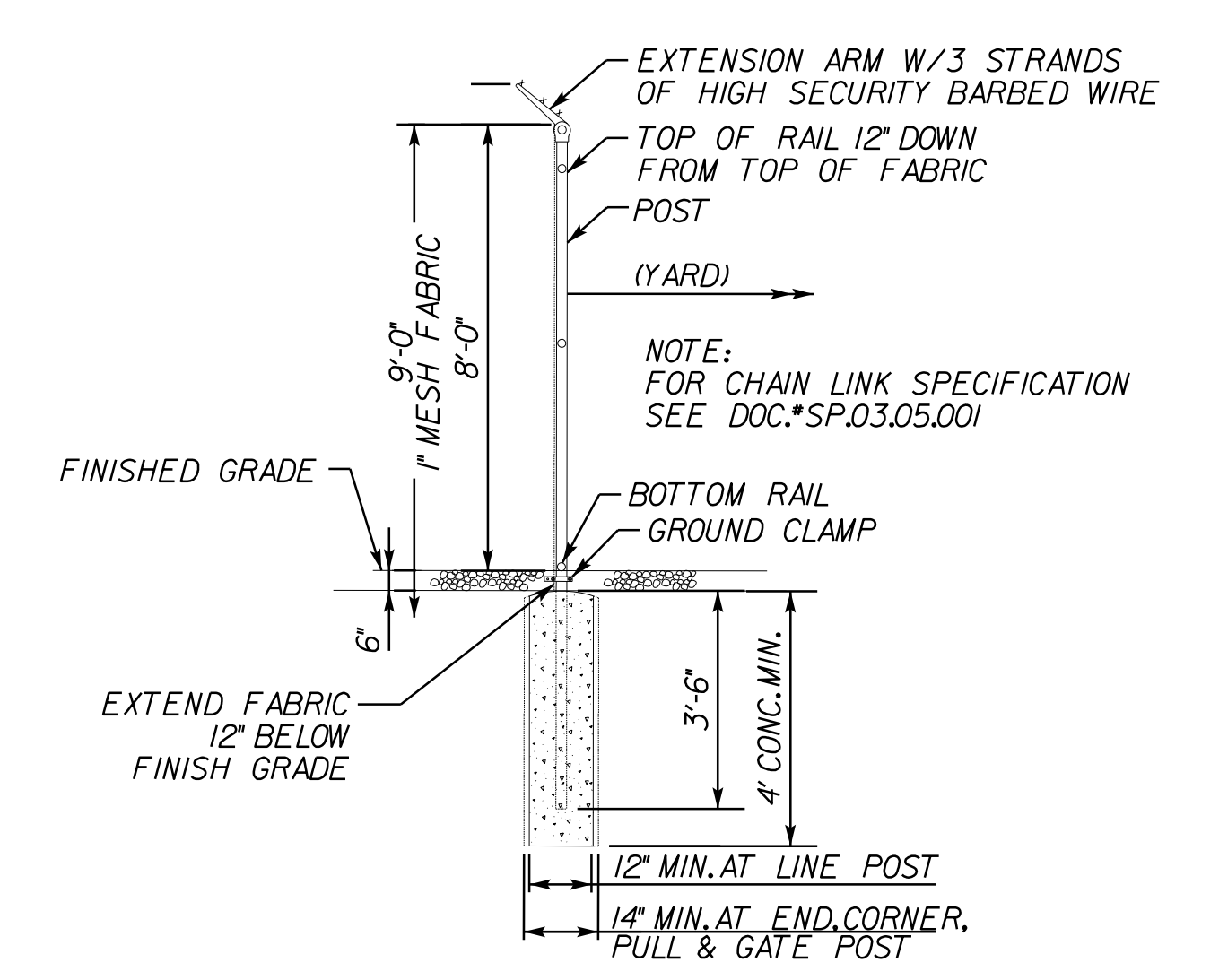


NOTES:

- REFER TO "SUBSTATION YARD - TYPICAL SECTION" FOR MATERIAL SPECIFICATIONS.
- RIPRAP SPECIFICATIONS**
 - MATERIAL SHALL CONSIST OF DURABLE ANGULAR SHAPED STONES WITH EACH STONE NOT WEIGHING LESS THAN 50 LBS (MASSDOT SPEC 583 SECTION 2JJ).
 - GEOTEXTILE FILTER FABRIC - PLACE THE FABRIC DIRECTLY ON THE PREPARED FOUNDATION, OVERLAP THE EDGES BY AT LEAST 2 FEET, AND SPACE ANCHOR PINS EVERY 3 FEET ALONG THE OVERLAP. BURY THE UPPER AND LOWER ENDS OF THE FABRIC A MINIMUM OF 12 INCHES BELOW GROUND. TAKE CARE NOT TO DAMAGE THE FABRIC BY DROPPING RIPRAP ON THE FABRIC. IF DAMAGE OCCURS, REMOVE THE RIPRAP AND REPAIR THE SHEET BY ADDING ANOTHER LAYER OF FILTER FABRIC WITH A MINIMUM OVERLAP OF 12 INCHES AROUND THE DAMAGED AREA. WHERE LARGE STONES ARE TO BE PLACED, A 4-INCH LAYER OF FINE SAND OR GRAVEL IS RECOMMENDED TO PROTECT THE FILTER FABRIC.
 - STONE PLACEMENT - PLACEMENT OF THE RIPRAP SHALL FOLLOW IMMEDIATELY AFTER PLACEMENT OF THE FILTER. PLACE RIPRAP SO THAT IT FORMS DENSE, WELL-GRADED MASS OF STONE TO MINIMIZE VOIDS. DO NOT PLACE RIPRAP BY DUMPING THROUGH CHUTES OR OTHER METHODS THAT CAUSE SEGREGATION OF STONE SIZES. BE CAREFUL NOT TO DISLodge THE UNDERLYING BASE OR FILTER WHEN PLACING THE STONES.
 - THE TOE OF THE RIPRAP SHALL BE KEYED INTO A STABLE FOUNDATION AT ITS BASE.

SECTION A-A (FENCE AND GRADING PLAN)

NOT TO SCALE



TYPICAL FENCE POST

NOT TO SCALE

REFERENCE DRAWINGS
FENCE AND GRADING PLAN

H-119593



DIGITALLY SEALED 10/28/2021

CONFIDENTIALITY STATEMENT
This document contains confidential and proprietary information of the company(s) named in the title block, dba National Grid ("National Grid"). It is to be used by authorized contractors for National Grid solely in connection with the specific project for which it has been transmitted. Any other use, its transmittal to third parties, or its reproduction without prior express written authorization of National Grid is strictly prohibited.

nationalgrid

MASSACHUSETTS ELECTRIC COMPANY

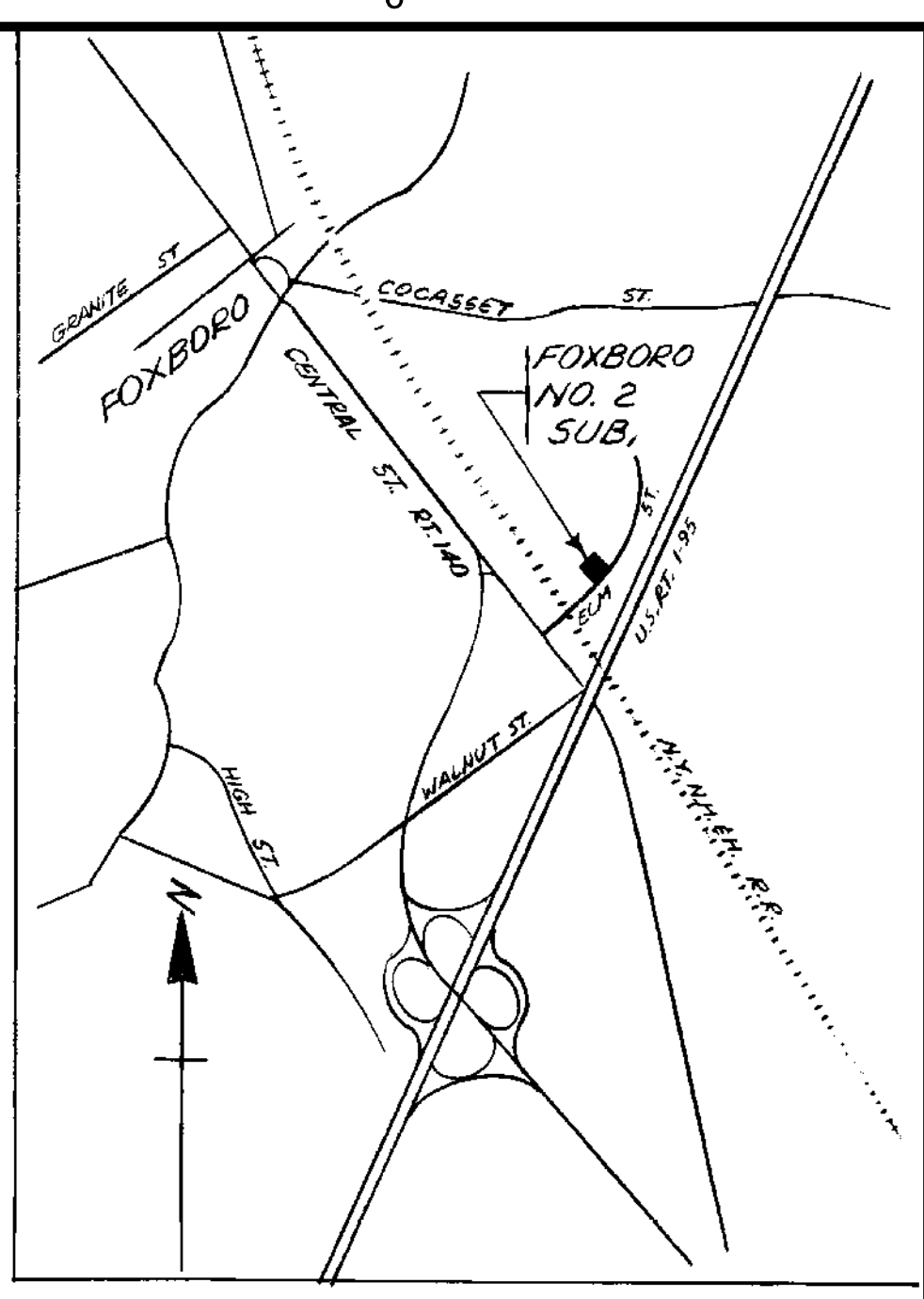
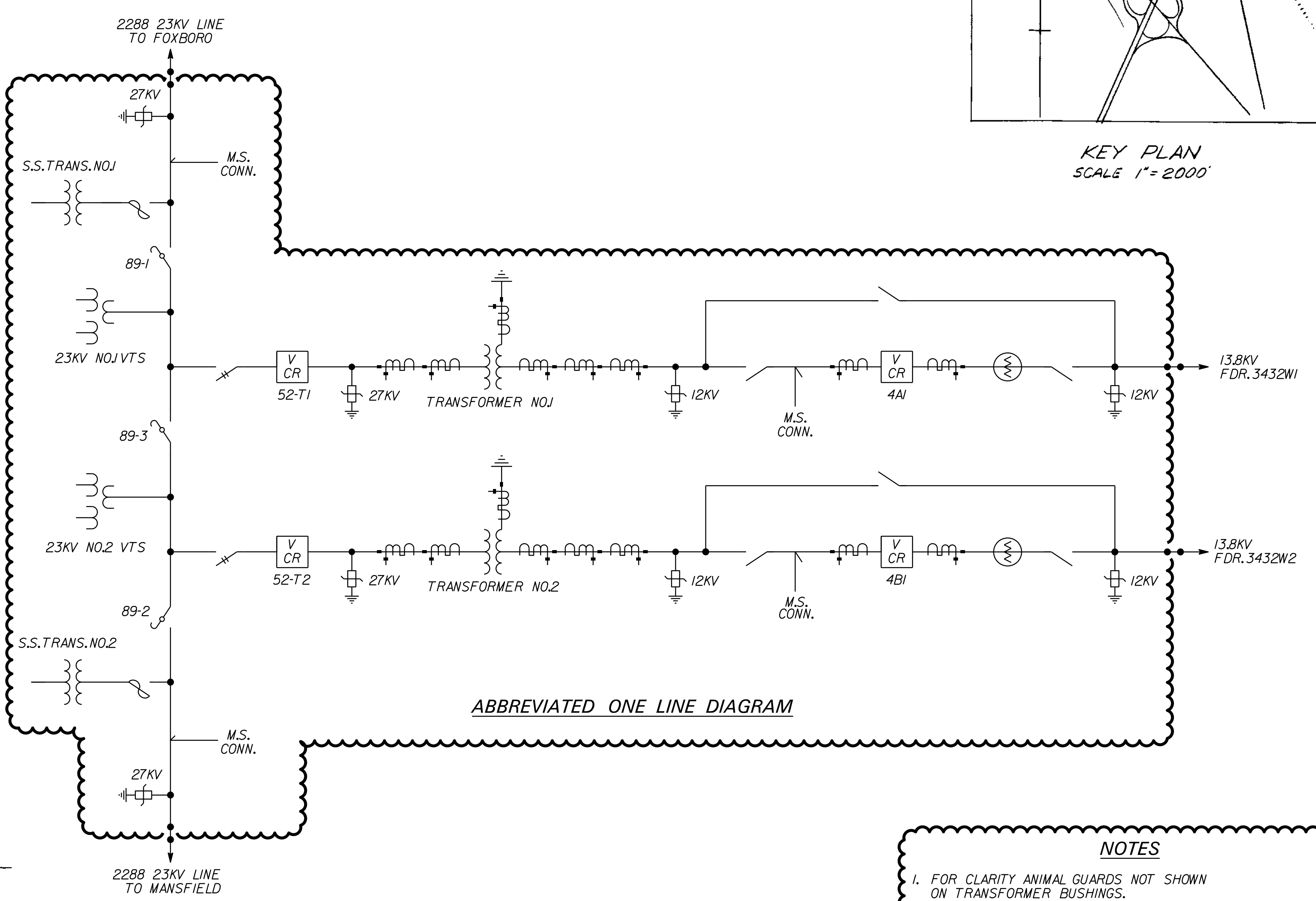
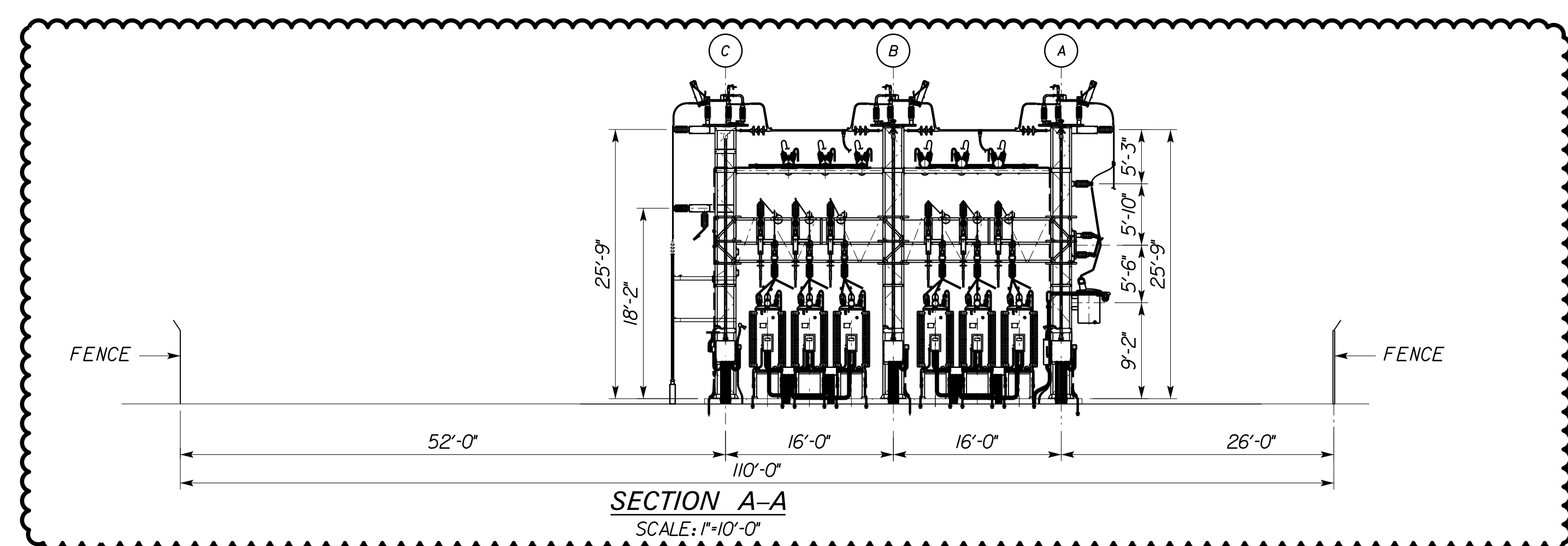
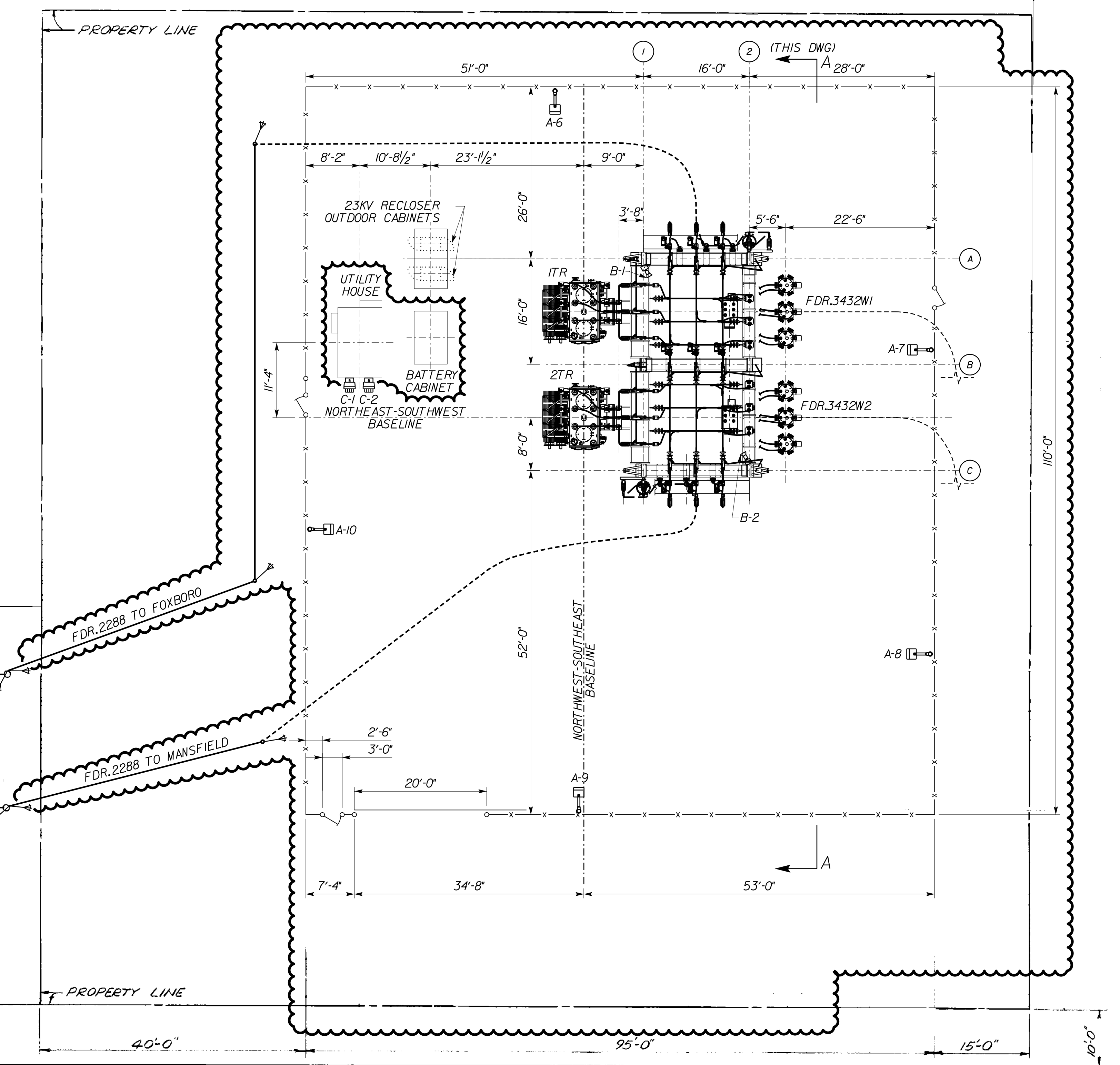
FOXBORO 2 NO. 3432 SUBSTATION
FOXBOROUGH, MASSACHUSETTS

SITE CONSTRUCTION DETAILS

SCALE NONE

REV.	DATE	DESCRIPTION	MADE BY	CHKD BY	INSP BY	APVD BY	REVISED BY	DATE	DESCRIPTION	MADE BY	CHKD BY	INSP BY	APVD BY
1	1/18/10	ADDED UTILITY BUILDING BATTERY CABINET.	RET										
2	1/18/10	ADDED UTILITY BUILDING BATTERY CABINET.	RET										
3	10-31-13	REPLACED RECLOSERS 3432W1 & 3432W2.	RET										
4	3-24-15	REPLACED C2 VACUUM SWITCH ON EXISTING FOUNDATION. RELOCATED CAP BANK #2 TO NEW FOUNDATION.	LTP										
5	11-30-16	REMOVED AB NOTIFIED DISCONNECTS 2918 & 2919. RELOCATED V.S. FROM BUS TO POLE MOUNT. ADDED AT.S. ST. A.SERV. S.S.#1 & S.S.#2. REMOVED 13.8KV BUS SECT.	MHC										

H-34607-6



NOTES

1. FOR CLARITY ANIMAL GUARDS NOT SHOWN ON TRANSFORMER BUSHINGS.

REFERENCE DRAWINGS

ONE LINE DIAGRAM H-11713
 FENCE AND GRADING PLAN H-119593
 23KV-13.8KV BUS STRUCTURE-ELECTRICAL ARRANGEMENT H-119570

THIS DRAWING H-34607-0, DATED FEBRUARY 1973, SUPERSEDES DRAWING D-7287-5, DATED NOVEMBER 2 1970.

CONFIDENTIALITY STATEMENT

This document contains confidential and proprietary information of the company(s) named in the title block, dba National Grid ("National Grid"). It is to be used by authorized contractors for National Grid solely in connection with the specific project for which it has been transmitted. Any other use, its transmittal to third parties, or its reproduction without prior express written authorization of National Grid is strictly prohibited.

nationalgrid

MASSACHUSETTS ELECTRIC COMPANY
 FOXBORO 2 NO.3432 SUBSTATION
 FOXBORO, MASSACHUSETTS

ULTIMATE LAYOUT

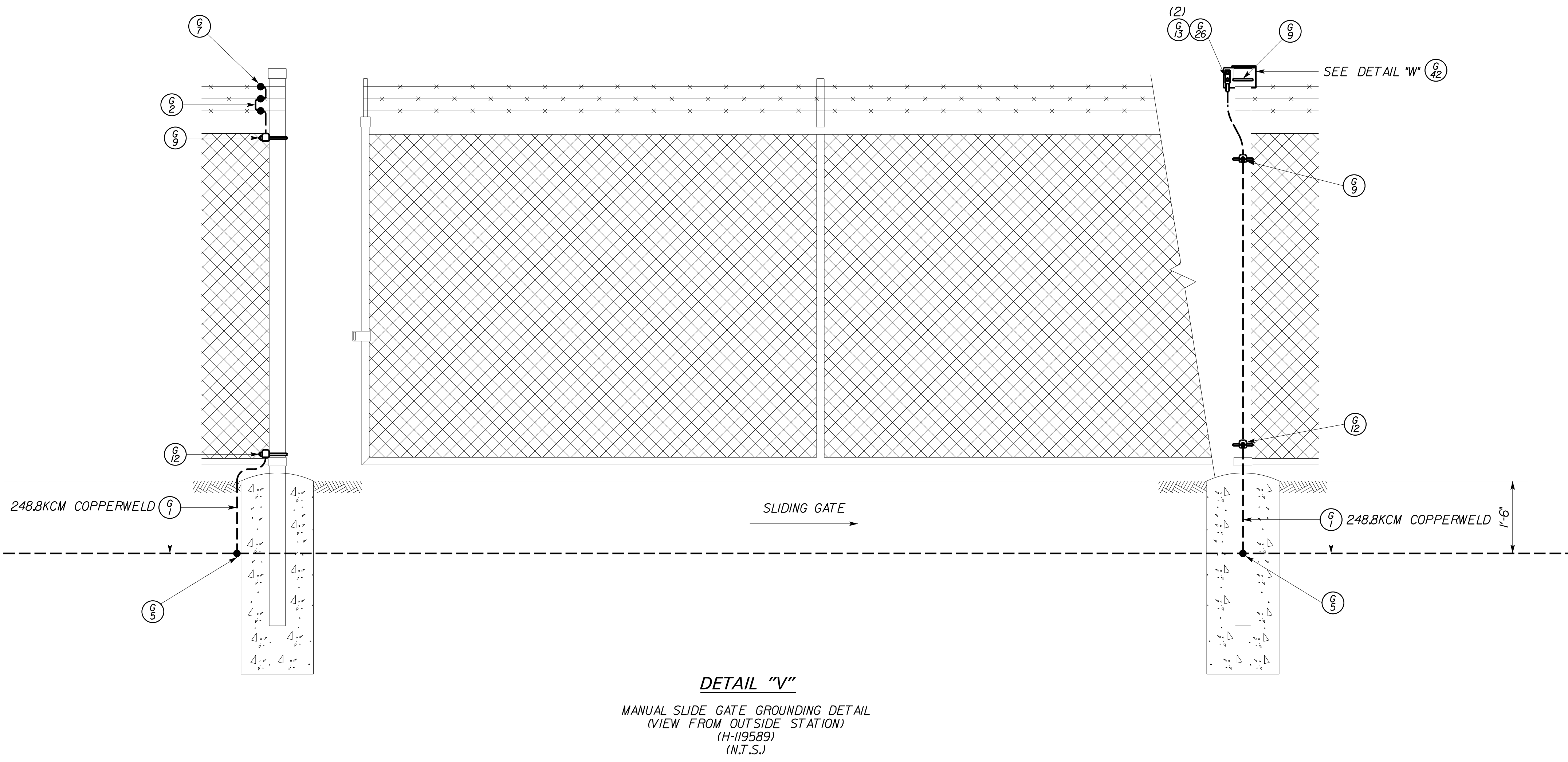
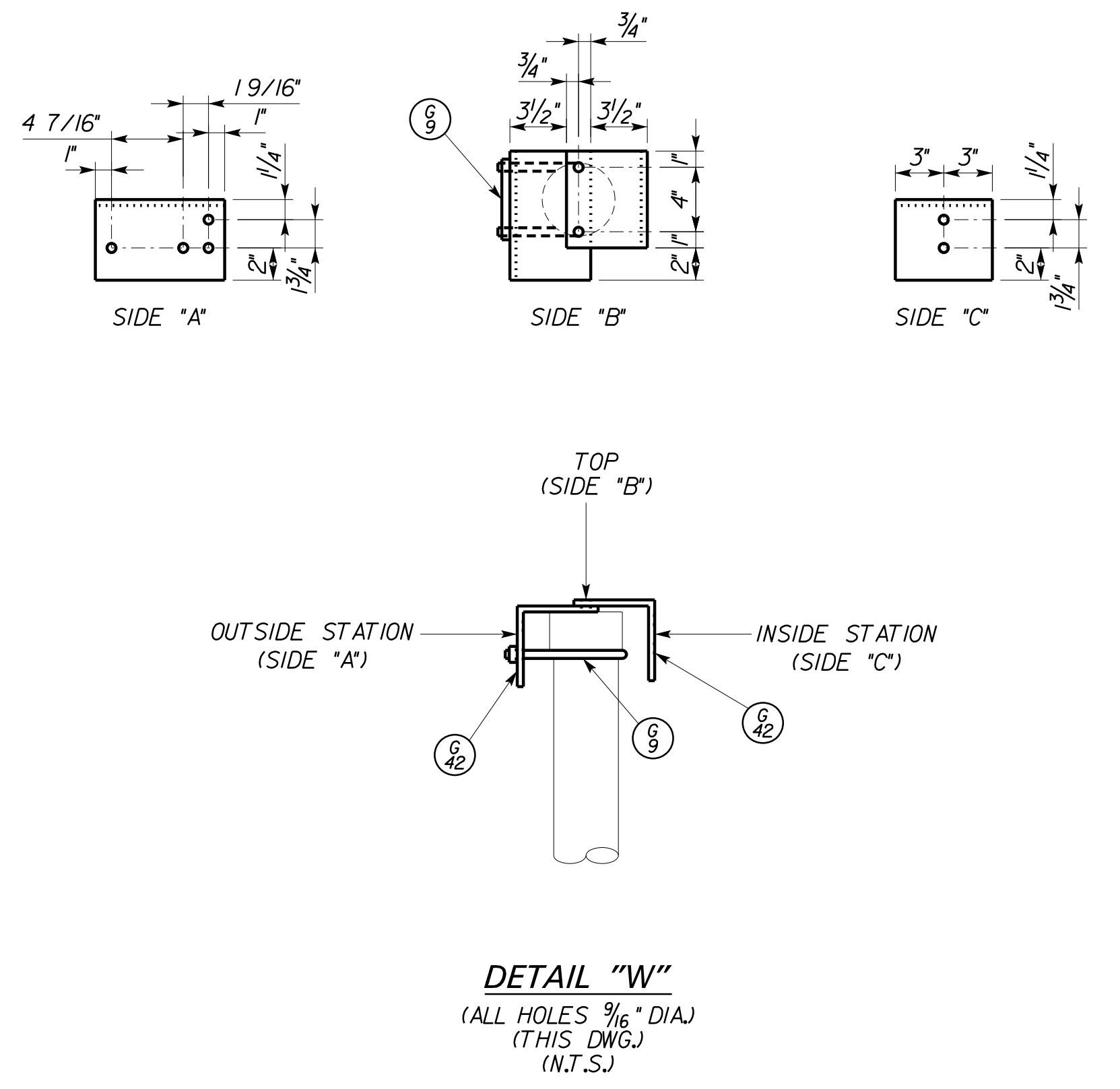
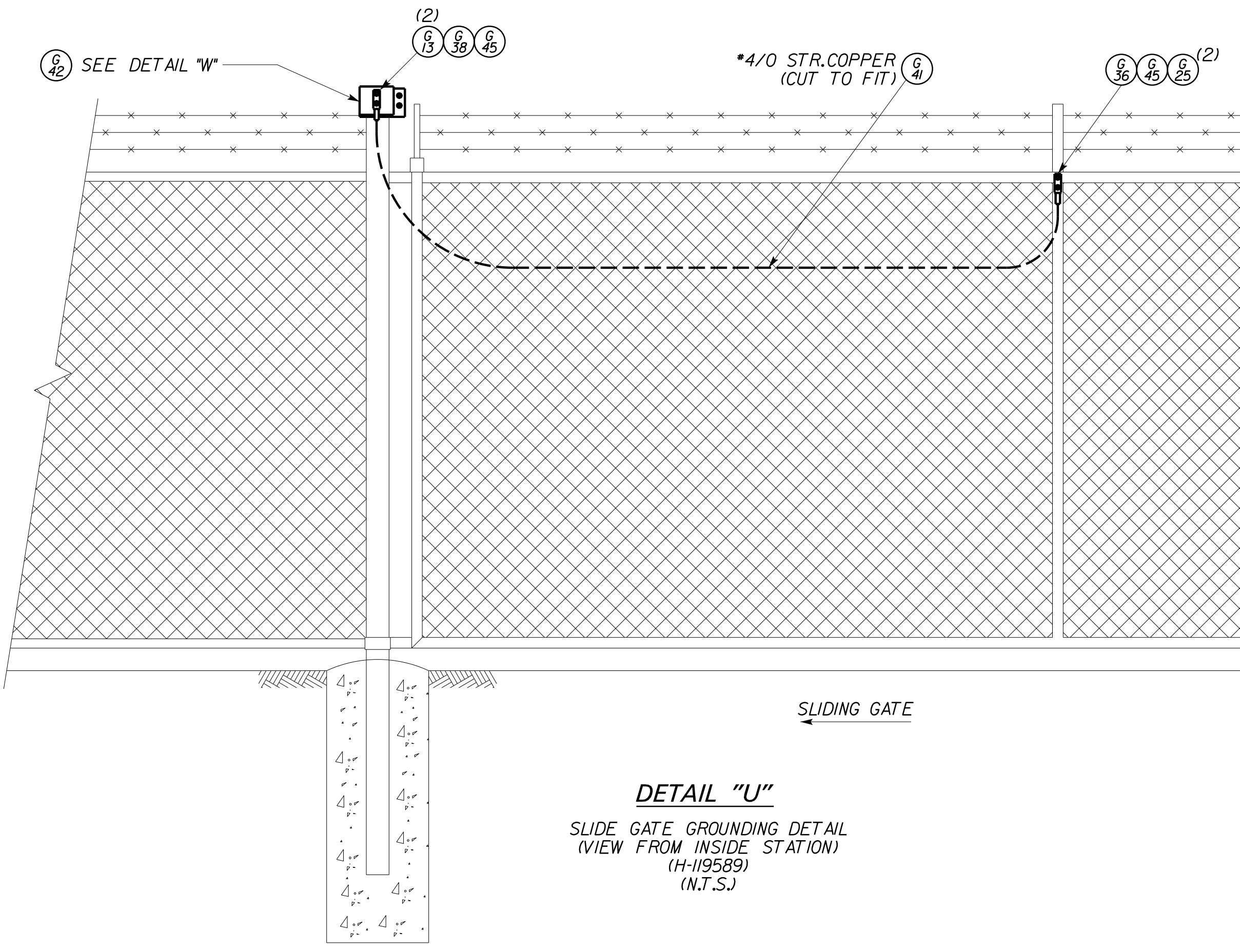
THE REGISTRANT OF THE NEWLY APPLIED SEAL, DATED 2/15/22, ONLY ASSUMES RESPONSIBILITY FOR THE CHANGES AS INDICATED BY THE FOLLOWING REVISION(S): 6

BURNS & MCDONNELL
 9400 WARD PARKWAY
 KANSAS CITY, MO 64114
 (816) 333-9400

BMCD PROJECT # 117054 CONTRACT NUMBER 4402007580
 BMCD PROJECT # 117054 CONTRACT NUMBER 4402007580

SCALE AS NOTED

REVISIONS		REV.	DATE	DESCRIPTION	MADE	CHKD	INSP	REVD	APVD
1	SSA/BMCD	1							
2	BTY/BMCD	2							
3	MG/BMCD	3							
4	SM/BMCD	4							



FOR NOTES & REFERENCE DRAWINGS SEE H-119589

CONFIDENTIALITY STATEMENT
This document contains confidential and proprietary information of the company(s) named in the title block, dba National Grid ("National Grid"). It is to be used by authorized contractors for National Grid solely in connection with the specific project for which it has been transmitted. Any other use, its transmittal to third parties, or its reproduction without prior express written authorization of National Grid is strictly prohibited.

nationalgrid

MASSACHUSETTS ELECTRIC COMPANY
FOXBORO 2 NO.3432 SUBSTATION
FOXBORO, MASSACHUSETTS

**23KV-13.8KV BUS STRUCTURE
GROUNDING DETAIL**

SCALE NOT TO SCALE